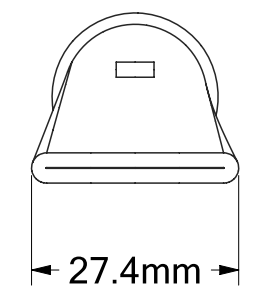
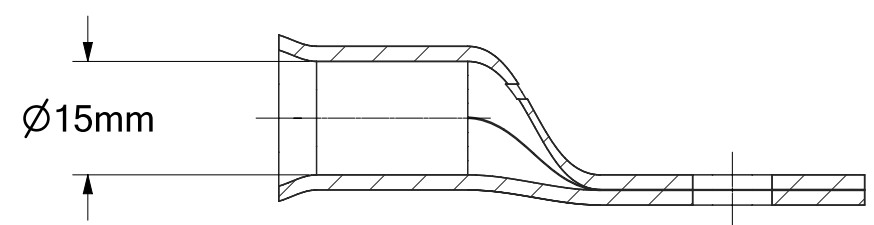
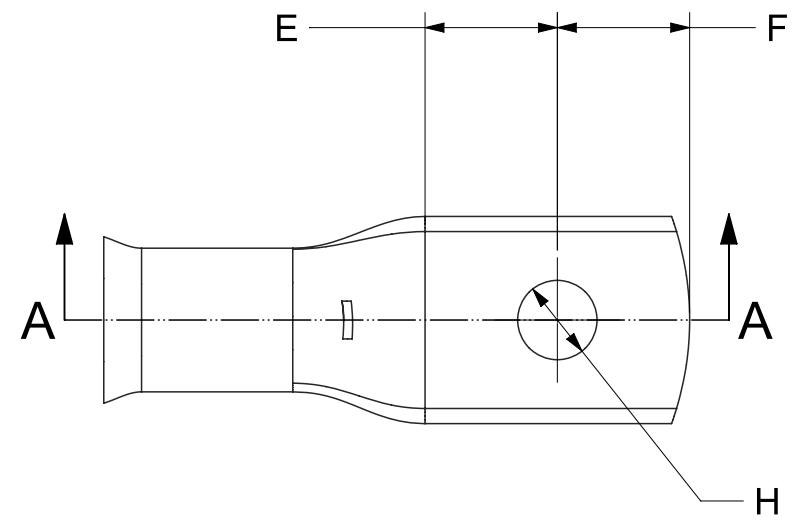


REVISION HISTORY	
1	Original Concept
2	Revision created for .pdf clarity
3	Table update



PART NO.	H (mm)	E (mm)	F (mm)
TCHD-120-0	N/A	N/A	35.0
TCHD-120-6	6.5	17.5	17.5
TCHD-120-8	8.5	17.5	17.5
TCHD-120-10	10.5	17.5	17.5
TCHD-120-12	13.0	17.5	17.5
TCHD-120-14	14.5	17.5	17.5
TCHD-120-16	16.5	17.5	17.5
TCHD-120-20	20.5	17.5	17.5

UOS - LINEAR TOLERANCE PERMISSABLE DEVIATIONS FOR SIZE RANGE:
Tolerances according to DIN ISO 2768 (V)

DIMS IN MM	0.5 to 3	>3 to 6	>6 to 30	>30 to 120	>120 to 400	>400 to 1000	>1000 to 2000	>2000 to 4000
	-	±0.5	±1.0	±1.5	±2.5	±4.0	±6.0	±8.0

TOTAL CONNECTIONS 2009
 Total Connections 2009 LTD
 www.tc2009.co.uk
 sales@tc2009.co.uk
 Tel 01249 812 707

Drawing No. TCDR2021
 Part No. TCHD-120-RANGE

Material. CW024A (C106) COPPER
 Finish. 5MICRON ELECTRO TIN PLATED

SIZE A3 Date 21/10/2021 Created By: Dan Hewlett REV 3

SCALE 1:1 SHEET 1 of 1